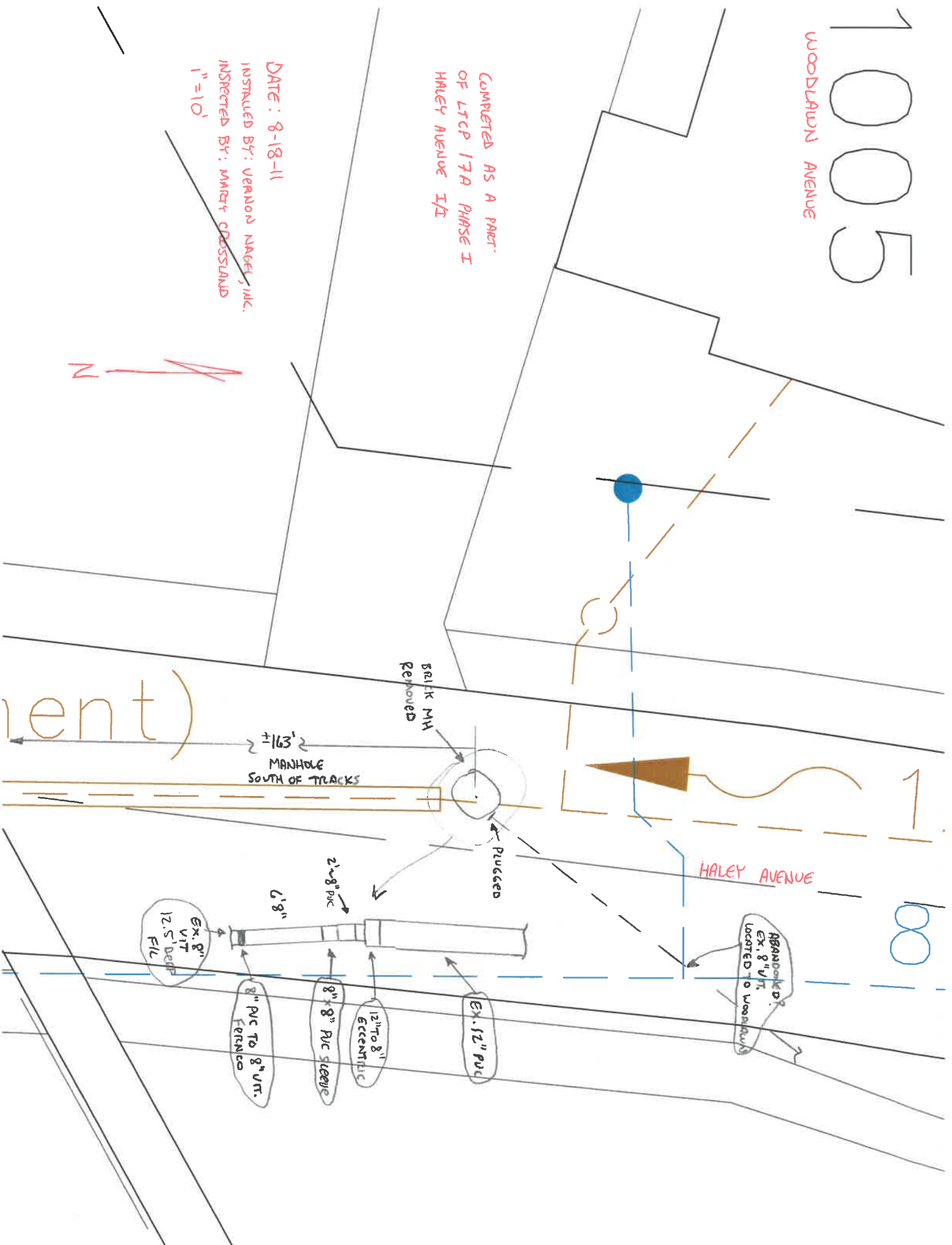


10005

WOODLAWN AVENUE

COMPLETED AS A PART  
OF LTCP 17A PHASE I  
HALEY AVENUE I/I

DATE: 8-18-11  
INSTALLED BY: VERNON NAGEL, INC.  
INSPECTED BY: MARY CROSSLAND  
1" = 10'



rent)

HALEY AVENUE

∞

Ex. 8" VIT  
12.5' DEEP  
FIL

8" PVC TO 8" VIT.  
FERRISCO

8" 8" PVC SLEEVE

12" TO 8" ECCENTRIC

Ex. 12" PVC

ABANDONED?  
Ex. 8" VIT.  
LOCATED TO WOODLAWN

BRICK MH  
REMOVED

Plugged

±163'  
MANHOLE  
SOUTH OF TRACKS

6" 8"

2" 8" PVC